

**HM  
JETS**

Made in Czech Republic



## **5 - blade Scale rotor Head**

### **Size 700/800**

Designed for 700/800 size helicopters. The Head is made from aircraft aluminium with a certificate . Stainless steel fasteners and high quality bearings are used.

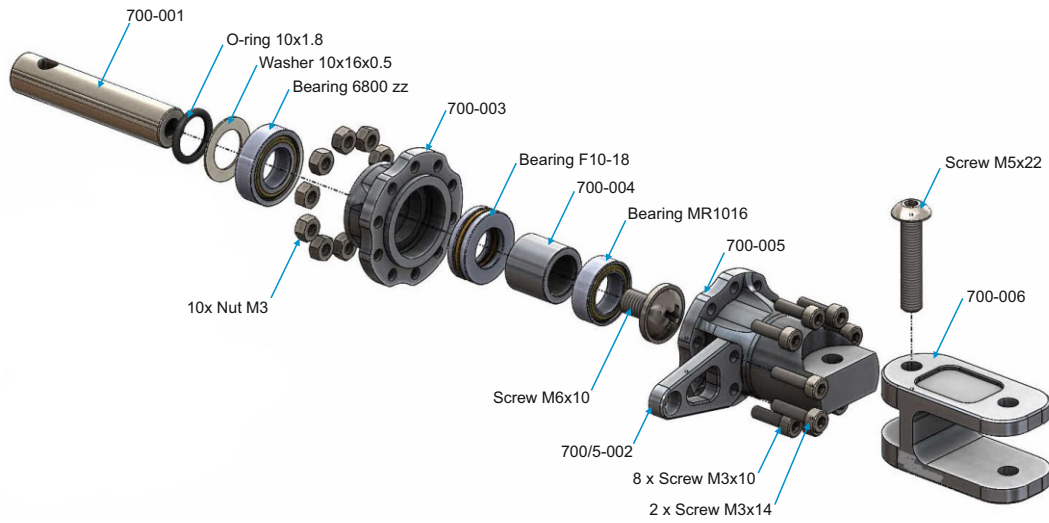
**Caution: The maximum rotation speed is 1500 rpm .  
None of the screws are glued !**

**!!! The screws must be glued by final assembly prior first flight !!!**

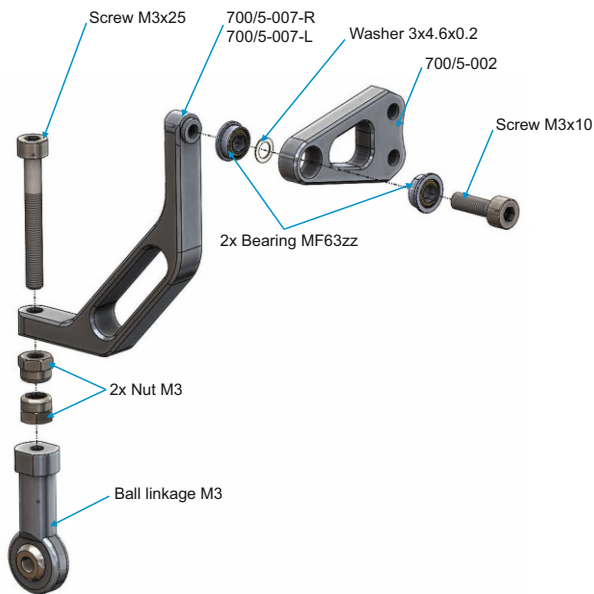
[www.gm-heli.cz](http://www.gm-heli.cz)

# Assembly Section

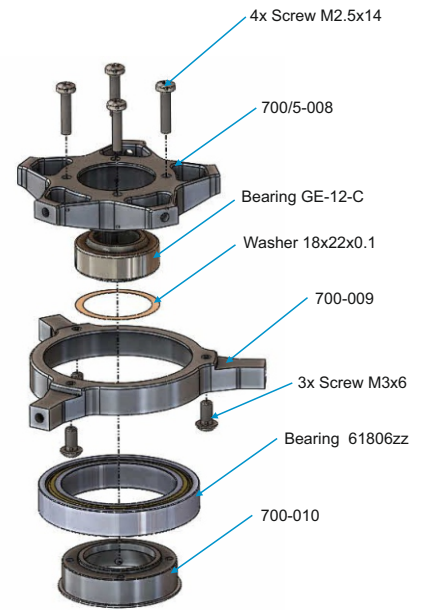
## Main Blade Assembly



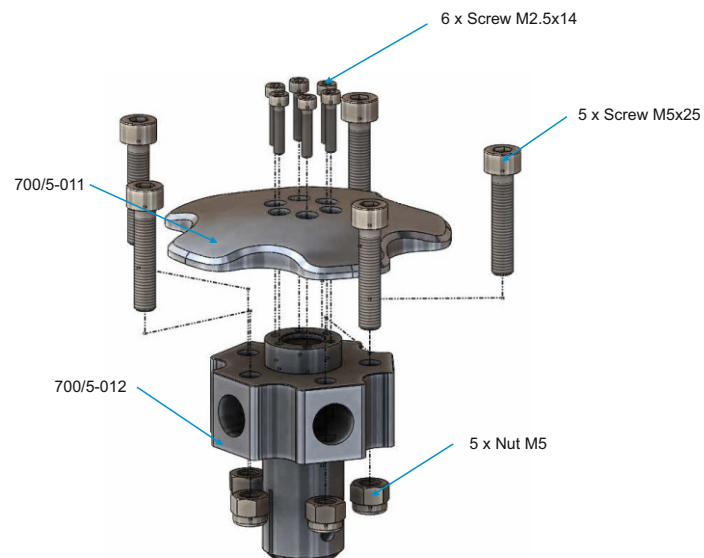
## Linkage Assembly



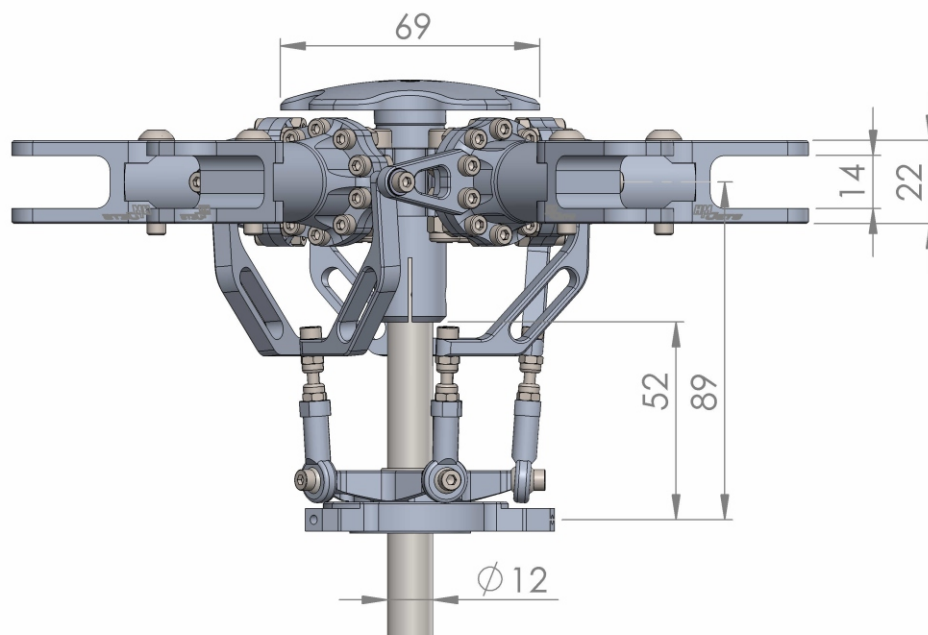
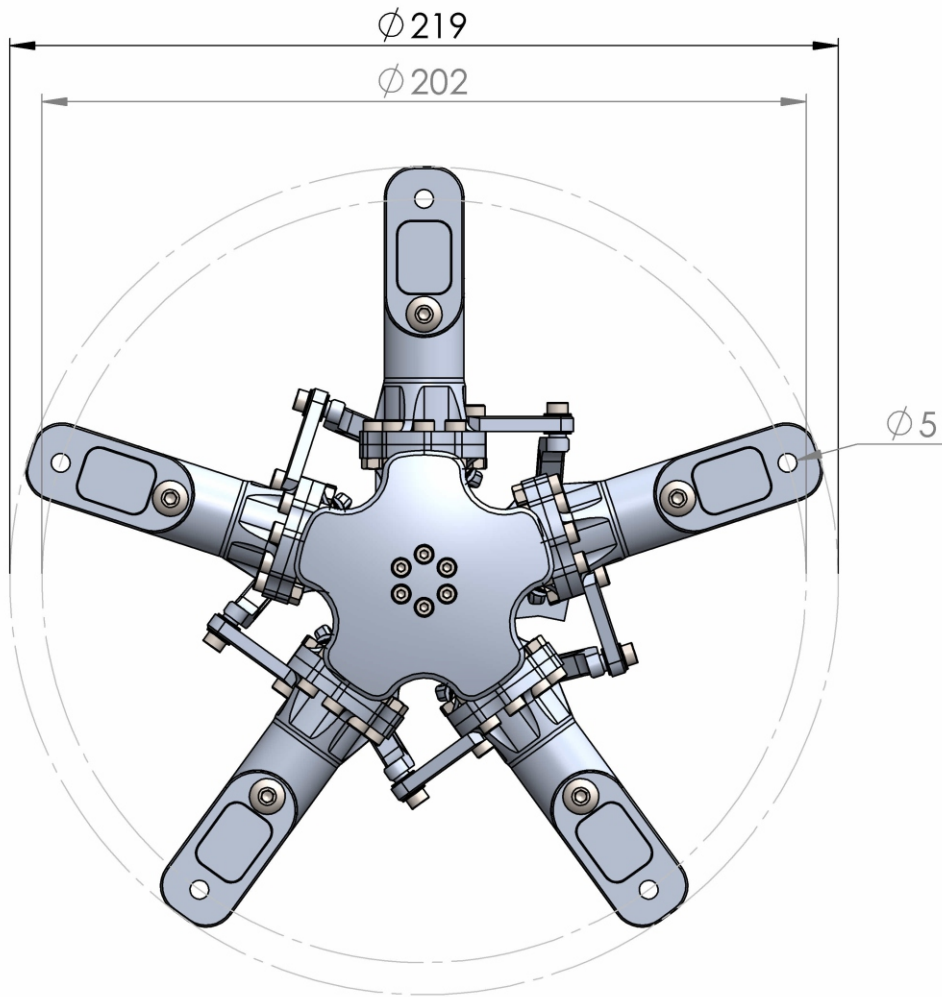
## Swash Plate Assembly



## Hub Assembly



# Drafting and Size



	Name	Pcs	Part number
Part List	Shaft 10x47	5	700-001
	Grip arm	5	700/5-002
	Grip root part	5	700-003
	Washer 10x15x12	5	700-004
	Grip center part	5	700-005
	Blade grip	5	700-006
	Linkage arm	5	700/5-007-R , 700/5-007-L
	Swash plate up part	1	700/5-008
	Swash plate down part	1	700-009
	Swash plate center part	1	700-010
	Head plate	1	700/5-011
	Hub	1	700/5-012
	Ball linkage M3	5	
	O ring 10x1.8	5	
	Washer 10x16x0.5	5	
	Washer 3x4.6x0.2	5	
	Washer 18x22x0.1	1	
	Screw M6x10	5	
	Screw M3x10	45	
	Screw M3x14	10	
	Screw M3x25	4	
	Screw M3x6	3	
	Screw M2.5x14	10	
	Screw M5x22 (ball head)	5	
	Screw M5x25 (flat head)	5	
	Nut M3	50	
	Self-fixing nut M3	10	
	Self-fixing nut M5	5	
	Bearing 6800zz	5	
	Bearing F10-18	5	
	Bearing MR1016	5	
	Bearing 61806zz	1	
	Bearing MF63zz	10	
Bearing GE-12-C	1		