

**HM
JETS**

Made in Czech Republic



4 - blade Scale rotor Head

Size 700/800

Designed for 700/800 size helicopters. The Head is made from aircraft aluminium with a certificate . Stainless steel fasteners and high quality bearings are used.

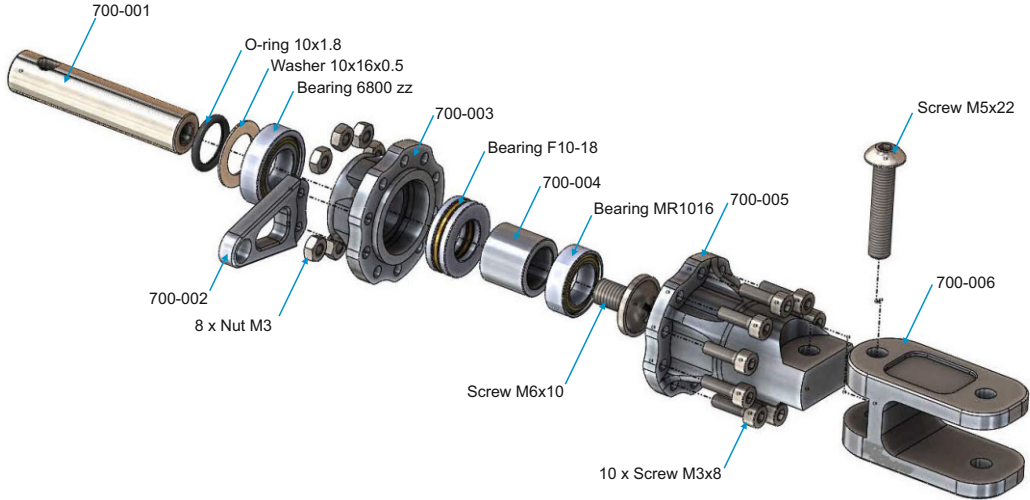
**Caution: The maximum rotation speed is 1500 rpm .
None of the screws are glued !**

!!! The screws must be glued by final assembly prior first flight !!!

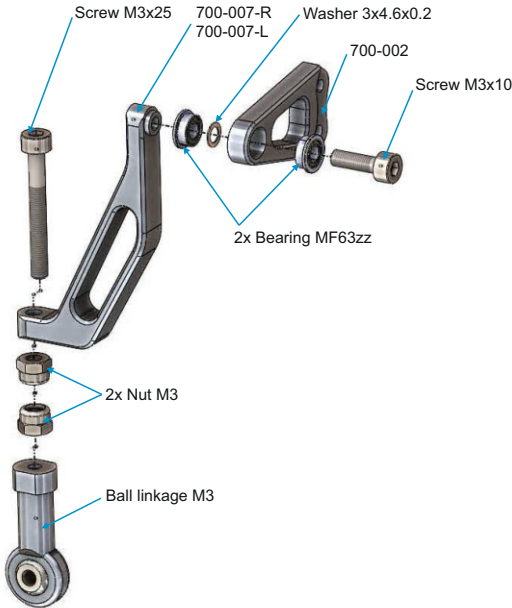
www.gm-heli.cz

Assembly Section

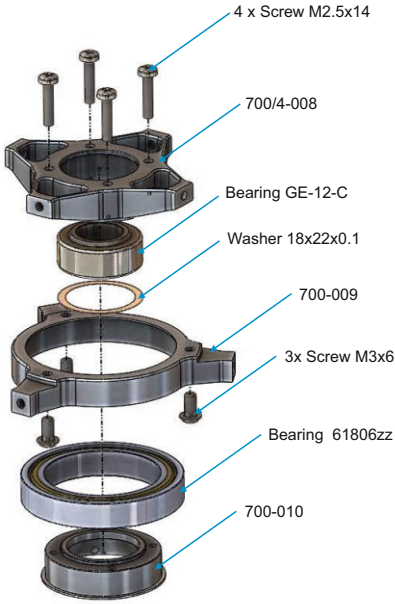
Main Blade Assembly



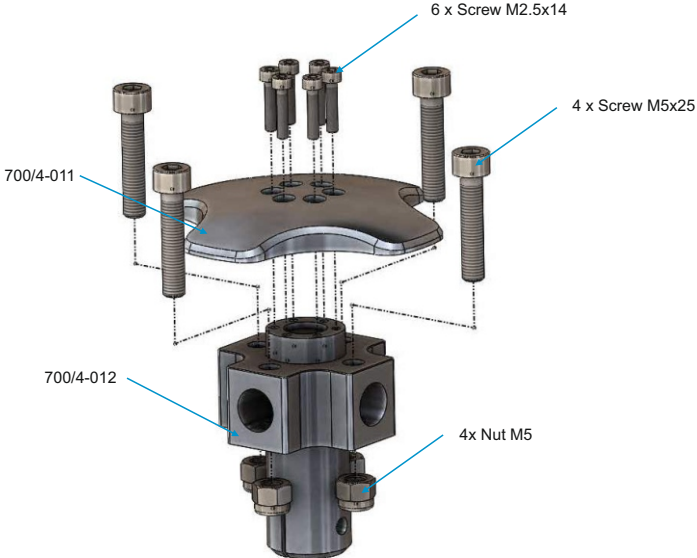
Linkage Assembly



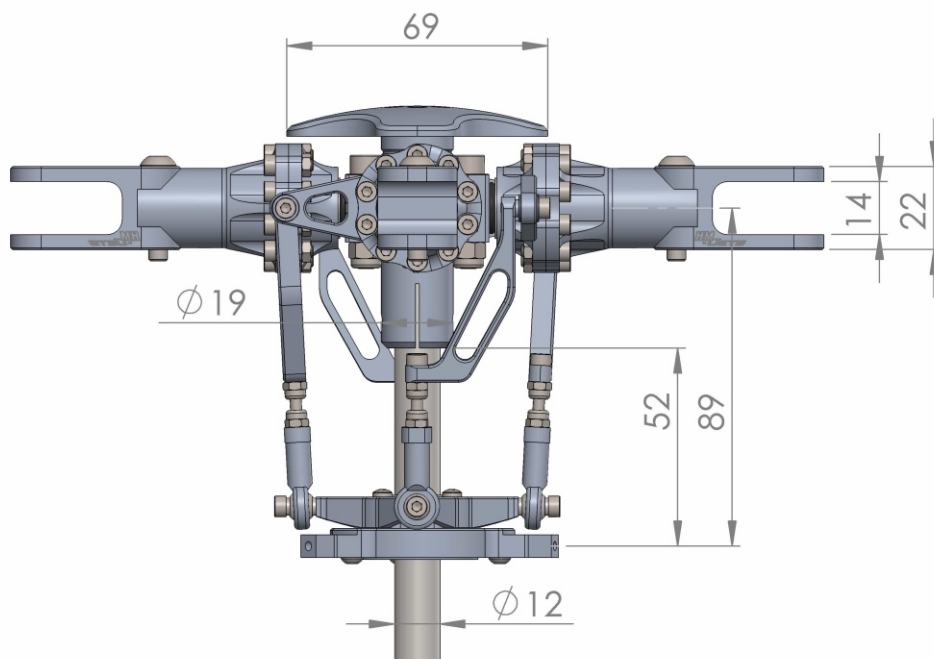
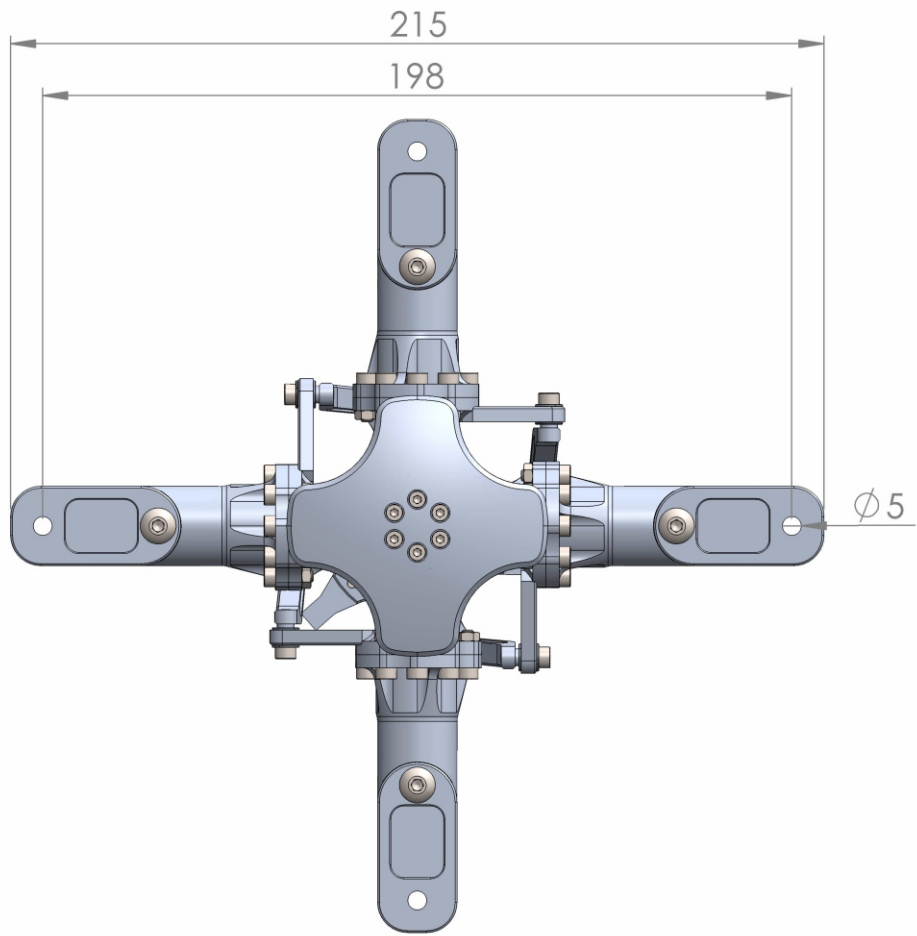
Swash Plate Assembly



Hub Assembly



Drafting and Size



Part List

Name	Pcs	Part number
Shaft 10x47	4	700-001
Grip arm	4	700-002
Grip root part	4	700-003
Washer 10x15x12	4	700-004
Grip center part	4	700-005
Blade grip	4	700-006
Linkage arm	4	700-007-R , 700-007-L
Swash plate up part	1	700/4-008
Swash plate down part	1	700-009
Swash plate center part	1	700-010
Head plate	1	700/4-011
Hub	1	700/4-012
Ball linkage M3	4	
O ring 10x1.8	4	
Washer 10x16x0.5	4	
Washer 3x4.6x0.2	4	
Washer 18x22x0.1	1	
Screw M6x10	4	
Screw M3x10		
Screw M3x25	4	
Screw M3x6	3	
Screw M2.5x14	10	
Screw M5x22 (ball head)	4	
Screw M5x25 (flat head)	4	
Nut M3	32	
Self-fixing nut M3	8	
Self-fixing nut M5	4	
Bearing 6800zz	4	
Bearing F10-18	4	
Bearing MR1016	4	
Bearing 61806zz	1	
Bearing MF63zz	8	
Bearing GE-12-C	1	